



Project:

Item Number:

Quantity:

VACUUM PACK MACHINES



40850



40858

Vacuum Pack Machines

MODELS

40850 Medio In-Chamber Vacuum Pack Machine

40851 Grande In-Chamber Vacuum Pack Machine

40858 Junior Out-of-Chamber Vacuum Pack Machine

FEATURES

In-Chamber Vacuum Pack Machines

- Suitable with wet or dry products
- Extends the shelf life of foods and cuts down on waste due to spoilage
- Vacuum packing opens the pores in foods, creating an excellent way to quickly marinate meats
- Digital controls
- Custom programming for vacuum cycles and sealing time
- Stainless steel chamber
- Easy removal of chamber components for cleaning
- 6 ft. (1.8 m) cord with plug

Out-of-Chamber Vacuum Pack Machine

- Requires specific bag type
- Extends the shelf life of foods and cuts down on waste due to spoilage
- Fine powders such as ground coffee and finely ground spices
- Not suited for use with liquids
- 6 ft. (1.8 m) cord with plug

DESCRIPTION

Vollrath vacuum pack machines extend the shelf life of refrigerated foods, enabling a broader and more flexible menu of fresh offerings. The in-chamber machine can pack wet or dry products and offers an excellent way to quickly marinate meats. The out-of-chamber machine packs dry foods.

WARRANTY: All models shown come with Vollrath's standard warranty against defects in materials and workmanship. For full warranty details, please refer to the Vollrath Equipment and Smallwares Catalog.

Agency Listings



Due to continued product improvement, please consult www.vollrathco.com for current product specifications.

Approvals	Date



Setting the Standard™

www.vollrathco.com

The Vollrath Company, L.L.C.
1236 North 18th Street
Sheboygan, WI 53081-3201 U.S.A.
Customer Service: 800.628.0830
Canada Customer Service: 800.695.8560
Main Fax: 800.752.5620 or 920.459.6573

Technical Services: 800.628.0832
Technical Services Fax: 920.459.5462

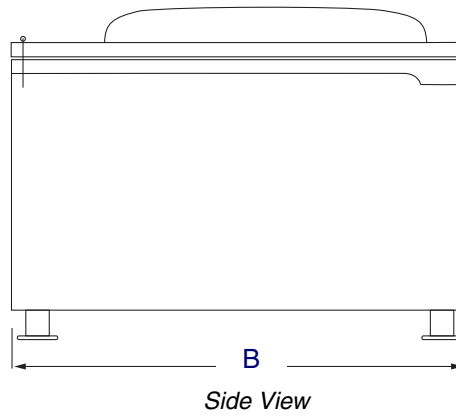
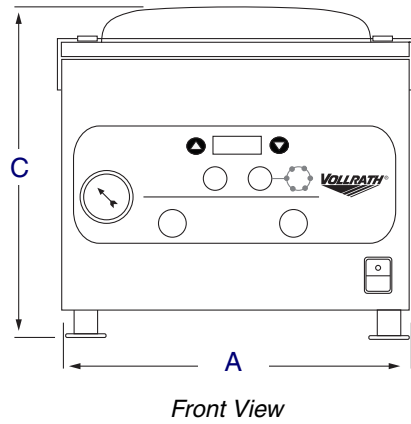
VACUUM PACK MACHINES

- MODELS** 40850 Medio In-Chamber Vacuum Pack Machine
 40851 Grande In-Chamber Vacuum Pack Machine
 40858 Junior Out-of-Chamber Vacuum Pack Machine

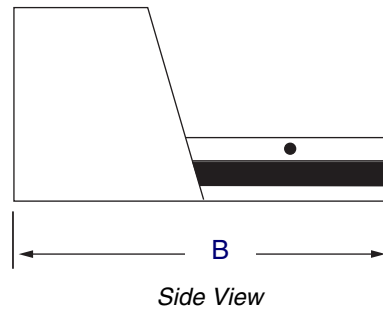
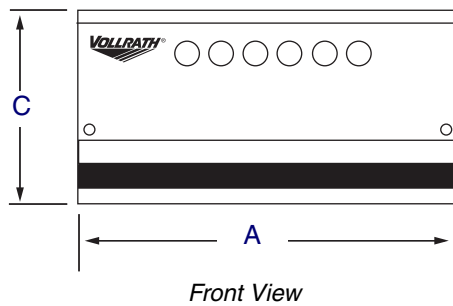
DIMENSIONS

Dimensions shown in inches (cm).

In-Chamber



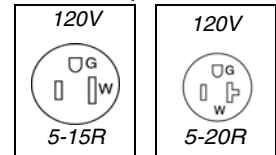
Out-of-Chamber



SPECIFICATIONS

Item	Dimensions					HP	Volts	Watts	Amps	Ship Weight lb (kg)	Plug
	(A) Width	(B) Depth	(C) Height	Chamber Size	Sealing Bar Length						
40850	15 ³ / ₁₆ (38.5)	20 ¹ / ₂ (52)	14 ⁹ / ₁₆ (37)	10 ⁵ / ₈ x 15 ³ / ₄ x 6 ⁵ / ₁₆ (27 x 40 x 16)	9 ¹³ / ₁₆ (25)	.98	120	450/700	5	98 (44.5)	5-15P
40851	21 ⁷ / ₈ (54.5)	22 ¹³ / ₁₆ (58)	20 ¹ / ₁₆ (51)	17 ¹ / ₈ x 17 ¹ / ₈ x 8 ¹ / ₄ (43.5 x 43.5 x 21)	16 ⁹ / ₁₆ (41.5)	1.68	120	1200	9	182 (82.6)	5-20P
40858	14 ³ / ₄ (37.5)	11 ¹¹ / ₁₆ (29.7)	5 ¹¹ / ₁₆ (14.5)	-	12 ³ / ₁₆ (31)	.6	120	450	3.3	15 (6.8)	5-15P

Receptacles



www.vollrathco.com

The Vollrath Company, L.L.C.
 1236 North 18th Street
 Sheboygan, WI 53081-3201 U.S.A.
 Customer Service: 800.628.0830
 Canada Customer Service: 800.695.8560
 Main Fax: 800.752.5620 or 920.459.6573

Technical Services: 800.628.0832
 Technical Services Fax: 920.459.5462