

# FS-1500MLH-C

## SERENITY SERIES

### CUBELET ICE MACHINE

Item # \_\_\_\_\_

Project: \_\_\_\_\_

Qty: \_\_\_\_\_

\*AutoCad available on KCL

FS-1500MLH-C

8/14

Item #13288

#### CUBELET DIMENSIONS

W x D x H

**FS-1500MLH-C**  
30 x 16<sup>1/2</sup> x 33

#### CONDENSING UNIT DIMENSIONS

W x D x H

**Installation Dimension**  
**SRC-14H**


37<sup>5/8</sup> x 25<sup>1/2</sup> x 37<sup>\*</sup>  
\*with legs

**Actual Dimension**  
**SRC-14H**

35<sup>5/8</sup> x 21<sup>1/2</sup> x 22



**FS-1500MLH-C**  
Remote Air-Cooled  
Shown

- Up to 1491 lbs. of ice production per 24 hours
- Less heat in the kitchen
- Minimized noise
- No wires between units
- Durable stainless steel exterior
- Produces ideal chewable cubelet ice
- Ice removed from evaporator after every shut down cycle
- Advanced CleanCycle24® Design 
- Dispenser ready / infrared bin control
- Slim depth - easier to clean dispenser
- R-404A Refrigerant



#### Warranty

Valid in United States, Canada, Puerto Rico, & U.S. Territories. Contact factory for warranty in other countries.

**Three Year** - Parts & Labor on entire machine. (Serial numbers Vxxxxxj and after.)

**Five Year** - Parts on compressor.



# HOSHIZAKI

## FS-1500MLH-C CUBELET ICE MACHINE SERENITY SERIES

**DIMENSIONS**  
W x D x H  
**FS-1500MLH-C**  
30 x 16<sup>1/2</sup> x 33

**Installation Dimension**  
**SRC-14H**  
37<sup>7/8</sup> x 25<sup>1/2</sup> x 37<sup>\*</sup>  
\*with legs

**Actual Dimension**  
**SRC-14H**  
35<sup>5/8</sup> x 21<sup>7/8</sup> x 22

### REMOTE AIR-COOLED

Water Temp ° F.	50°	70°	90°
Air Temp ° F.			
70°	1491	1444	1383
80°	1324	1268	1215
90°	1163	<b>1165</b>	1067

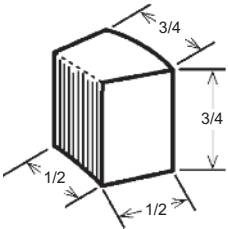
### UTILITY CONSUMPTION

Model Number	Approximate Electrical		KWH per 100 LBS.		Potable Water Gal. per 100 lbs.	Condenser Water Gal. per 100 lbs.
	90/70	70/50	90/70	70/50		
FS-1500MLH-C with SRC-14H	2122	2097	4.51	3.75	12	N/A

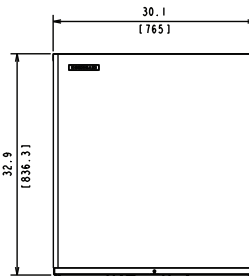
### SPECIFICATIONS

Model Number	Condenser	Amperage	Min. Circuit Ampacity	Shipping Weight
FS-1500MLH-C	Remote Air-Cooled	15	15	222 lbs.
SRC-14H	Air-Cooled	20	20	235 lbs.

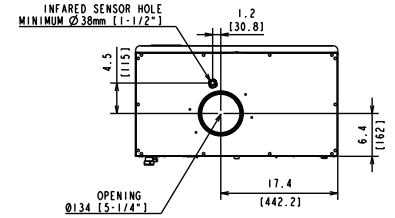
### \*CUBELET DIMENSIONS



\*approximate size in inches, image not to scale



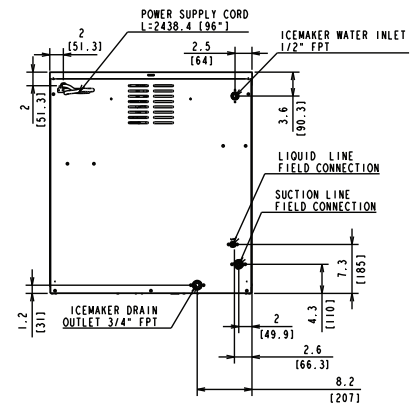
FRONT VIEW



ICE DROP ZONE

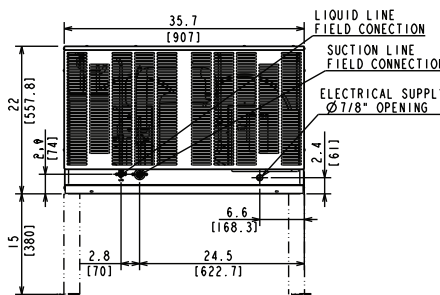


SIDE VIEW

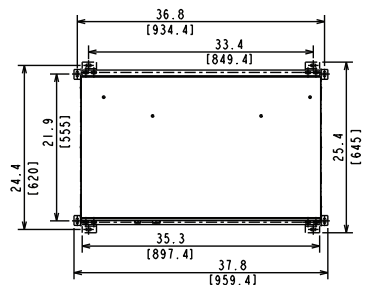


BACK VIEW

SRC-14H Remote Condensing Unit (Sold Separately)  
For Use with FS-1500MLH-C



FRONT VIEW



TOP VIEW

Pre-Charged Tubing Kits  
(Sold Separately)  
• 20' R404-20610  
• 35' R404-35610  
• 55' R404-55610



### ELECTRICAL & PLUMBING / FS-1500MLH-C

- 115-120V/60/1
- 15 amp Max Fuse/HACR Breaker Size
- 1/2" FPT copper or equivalent independent potable water supply
- 3/4" FPT independent drain connection

### CONDENSING UNIT / SRC-14H

- 208-230V/60/1
- 20 amp Max Fuse/HACR Breaker Size

### OPERATING LIMITS

- Ambient Temp Range 45 - 100°F
- Water Temp Range 45 - 90°F
- Water Pressure 10 - 113psig
- Voltage Range 104 - 127V

### CONDENSING UNIT

- Voltage Range 187 - 253V
- Ambient Temp Range -4 - 122°F

### SERVICE

- Panels easily removed and all components accessible for service.
- No wires between units
- Pump down cycle



© HOSHIZAKI AMERICA, INC.

618 Hwy. 74 S., Peachtree City, GA 30269

TEL 1-800-438-6087

FAX 1-800-345-1325

www.hoshizaki.com

Printed in U.S.A.

