

# DKM-500B\_H

## CRESCENT CUBER ICE MACHINE AND DISPENSER SERENITY SERIES

Item # \_\_\_\_\_

Project: \_\_\_\_\_

Qty: \_\_\_\_\_

\*AutoCad available on KCL

DKM-500B\_H

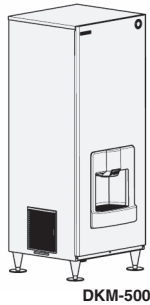
04/18/16

Item # 13225

### DIMENSIONS W x D x H

**DKM-500B\_H**  
30 x 28 x 77\*

\*with 6" legs  
(or optional casters)





### DKM-500BAH

Air-Cooled  
Shown with optional  
6" casters

### DKM-500BWH

Water-Cooled

- Up to 476 lbs. of ice production per 24 hrs.
- Insulated polyethylene bin has a storage capacity of 140 lbs.\*
- 35% quieter compared to other hotel dispenser applications
- Durable, attractive one piece stainless steel exterior design
- One piece design allows for easy installation and serviceability
- Self-contained design reduces opportunities for cross contamination
- Protected by H-GUARD Plus Antimicrobial Agent 
- Push button operated; dispenses 13 lbs. of ice per minute
- 6" Flanged legs are standard
- Optional 6" casters available
- Water valve accessory as an option
- CycleSaver™ design 
- R-404A Refrigerant

\* The DKM-500BAH is ENERGY STAR qualified.

### Warranty

Valid in United States, Canada, Puerto Rico, & U.S. Territories. Contact factory for warranty in other countries.

**Three Year** - Parts & Labor on entire machine.

**Five Year** - Parts on: hermetic compressor, air-cooled fin and tube type condenser.

\*Rated in accordance with AHRI Standard 820 (I-P)



© HOSHIZAKI AMERICA, INC.



# DKM-500B\_H CRESCENT CUBER ICE MACHINE AND DISPENSER SERENITY SERIES

## DIMENSIONS W x D x H

**DKM-500B\_H**  
30 x 28 x 77\*

\*with 6" legs  
(or optional casters)

- Air-cooled
- Water-cooled

### AIR-COOLED

Water Temp° F.	50°	70°	90°
Air Temp° F.			
70°	476	464	434
80°	467	449	411
90°	464	436	401

### WATER-COOLED

Water Temp° F.	50°	70°	90°
Air Temp° F.			
70°	448	442	420
80°	443	434	404
90°	442	427	400

### STORAGE BINS

Model Number	AHRI-Rated Capacity*
DKM-500BAH	140 lbs.
DKM-500BWH	140 lbs.

\*Rated in accordance with AHRI Standard 820 (I-P)

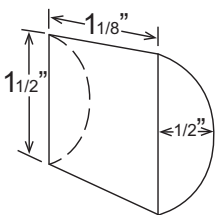
### UTILITY CONSUMPTION

Model Number	Ice Production per Cycle		KWH per 100 LBS.		Potable Water Gallons per 100 lbs.
	Lbs.	Cubes	90/70	70/50	
DKM-500BAH	7	360	6.5	5.6	22.4
DKM-500BWH	7.5	360	5.2	5.0	29.9

### SPECIFICATIONS

Model Number	Condenser	Min. Circuit Ampacity	Shipping Weight
DKM-500BAH	Air-Cooled	20	410 lbs.
DKM-500BWH	Water-Cooled	20	372 lbs.

### \*KM CUBE DIMENSIONS



\*approximate size, image not to scale

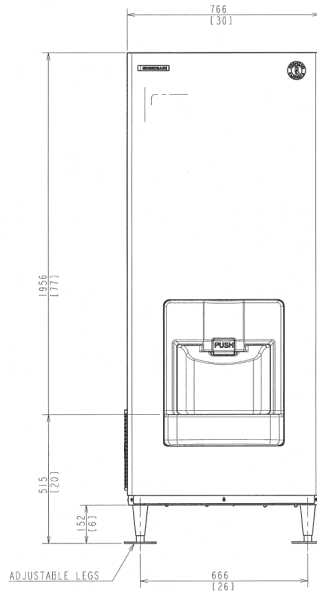
### ELECTRICAL & PLUMBING/DKM-500B\_H

- 115V/60/1
- 1/2" FPT Water Inlet
- 3/4" FPT x2 Drain
- Icemaker Water Supply Line: Minimum 1/4" Nominal ID Copper Water Tubing or Equivalent
- Icemaker Drain Line: Minimum 3/4" Nominal ID Hard Pipe or Equivalent
- Water-Cooled Model (Lines Must Be Independent of Icemaker)
- Condenser Water Supply Line: Minimum 1/4" Nominal ID Copper Water Tubing or Equivalent
- Condenser Drain/Return Line: Minimum 1/4" Nominal ID Hard Pipe (open drain system) or Copper Water Tubing (closed loop system) or Equivalent

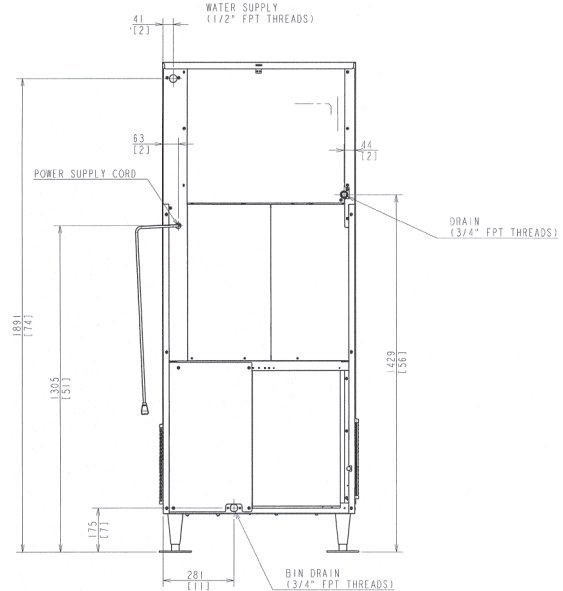


© HOSHIZAKI AMERICA, INC.

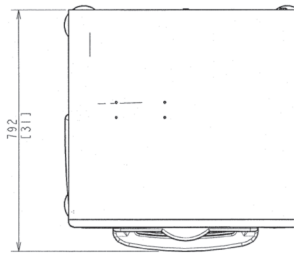
618 Hwy. 74 S., Peachtree City, GA 30269



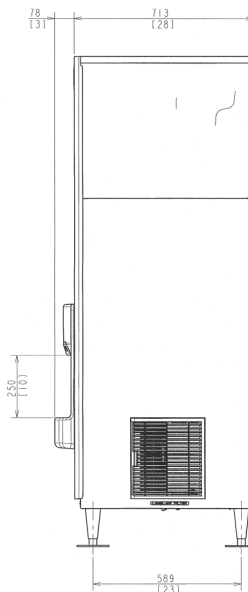
FRONT VIEW (Air-Cooled Unit)



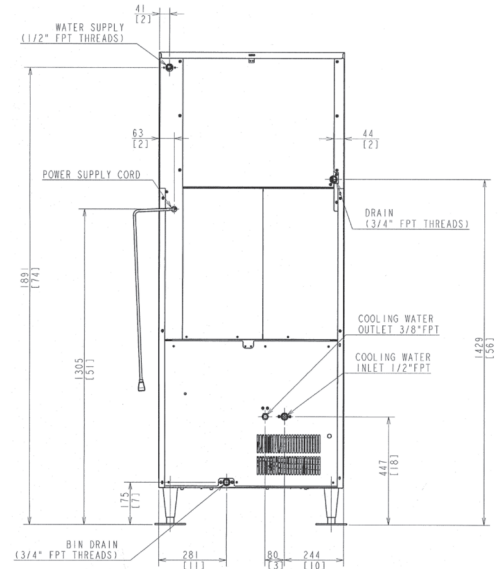
REAR VIEW (Air-Cooled Unit)



TOP VIEW



SIDE VIEW (Air-Cooled Unit)



REAR VIEW (Water-Cooled Unit)

### OPERATING LIMITS

- Ambient Temp Range 45 - 100 F
- Water Temp Range 45 - 90 F
- Water Pressure 10 - 113psig
- Voltage Range 104 - 127V

### SERVICE

- Panels easily removed and all components accessible for service.
- Removable/cleanable air filter. (Air-Cooled model only)



TEL 1-800-438-6087

FAX 1-800-345-1325

www.hoshizaki.com

Printed in U.S.A.