

Under Counter Tables and Worktops

- Stainless steel top, front, and sides.
- Aluminum interior lining prevents corrosion
- Strong body with thick walls, injected with CFC free polyurethane foam
- Exterior cabinet made of stainless steel for added corrosion protection
- Self closing doors with safety stop at 120 °
- Heavy-duty, chrome-plated hinges
- Recessed handles
- Reinforced, adjustable, heavy-duty epoxy coated shelves
- Heavy-duty casters for easy transportation and added mobility
- Hermetic seal with vinyl magnetic gasket keyed into a thermal breaker
- UL Classified to ANSI/NSF 7
- Heavy-duty R-134a condensing unit with easy access for maintenance
- Forced-air evaporator



Model No.	Description	Size DxLxH	Voltage	Amps	HP	Cubic Feet	Est. Ship Wt
FST-27	1 Door/2 Shelves	30.375" x 27.5" x 35.687"	115	4.1	1/5	6.6	200#
FST45	2 Door/4 Shelves	30.375" x 45" x 35.687"	115	6.3	1/4	11.6	285#
FST-59	2 Door/4 Shelves	30.375" x 59" x 35.687"	115	7.8	1/3	15.7	325#
SST-27	1 Door/2 Shelves	30.375" x 27.5" x 39.94"	115	4.1	1/5	6.6	200#
SST45	2 Door/4 Shelves	30.375" x 45" x 39.94"	115	6.3	1/4	11.6	285#
SSt-59	2 Door/4 Shelves	30.375" x 59" x 39.94"	115	7.8	1/3	15.7	330#

Fogel USA

831 Easy Cayuga St • Philadelphia, PA 19124 • 1-800-344-8222 • 1-215-464-6800
 Fax: 1-215-969-4890 • Email: sales@fogelusa.com • www.fogelusa.com

Undercounter Tables and Worktops



Technical Data

Model #	FST-27	FST-45	FST-59	SST-27	SST-45	SST-59
Outside Dimensions						
Depth	30.375"	30.375"	30.375"	30.375"	30.375"	30.375"
Length	27.5"	45"	59"	27.5"	45"	59"
Height	35.687"	35.687"	35.687"	39.94"	39.94"	39.94"
Door Size	27"Lx26"H	22"Lx26"H	27"Lx26"H	27"Lx26"H	22"Lx26"H	27"Lx26"H
Door Type	1 swing	2 swing	2 swing	1 swing	2 swing	2 swing
Inside Dimensions						
Depth	22.88"	22.88"	22.88"	22.88"	22.88"	22.88"
Length	23.5"	41"	54"	23.5"	41"	54"
Height	26"	26"	26"	26"	26"	26"
Shelf Size 16.812"D	22.56"L	19.88"L	26.88"L	22.56"L	19.88"L	26.88"L
# of Shelves	2	4	4	2	4	4
Capacity: Cubic Foot	6.6	11.6	15.7	6.6	11.6	15.7
Specifications						
Operating Temperature	33°F-41°F	33°F-41°F	33°F-41°F	33°F-41°F	33°F-41°F	33°F-41°F
Refrigerant	R-134a	R-134a	R-134a	R-134a	R-134a	R-134a
Compressor Size HP	1/5	1/4	1/3	1/5	1/4	1/3
Voltage	115	115	115	115	115	115
Amperage	4.1	6.3	7.8	4.1	6.3	7.8
Cord and Plug	yes	yes	yes	yes	yes	yes
Shipping Dimensions						
Depth	34"	34"	34"	34"	34"	34"
Length	30.4"	47.75"	61"	30.4"	47.75"	61"
Height	35.75"	35.75"	35.75"	35.75"	35.75"	35.75"
Gross Weight lbs.	193	281	322	196	285	327
Cubic feet	21	34	43	25	40	51

- Specification subject to change without notice.



831 E Cayuga Street, Philadelphia, PA 19124 USA • (215) 464-6800 • 1-800-344-8222
 Fax (215) 969-4890 • E-Mail: sales@fogelusa.com • www.fogelusa.com

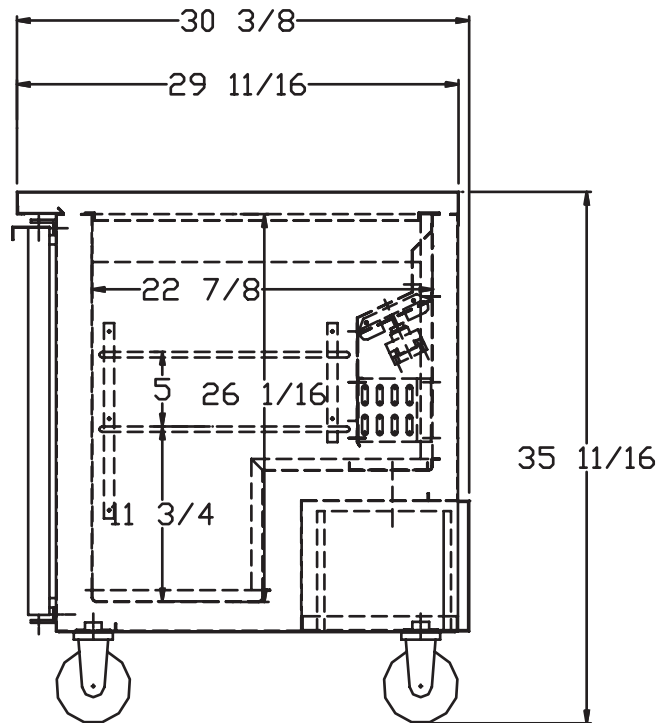
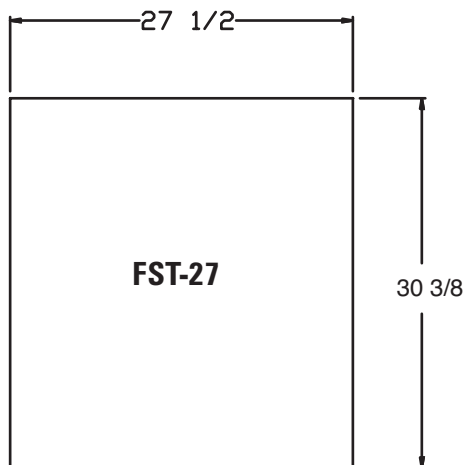
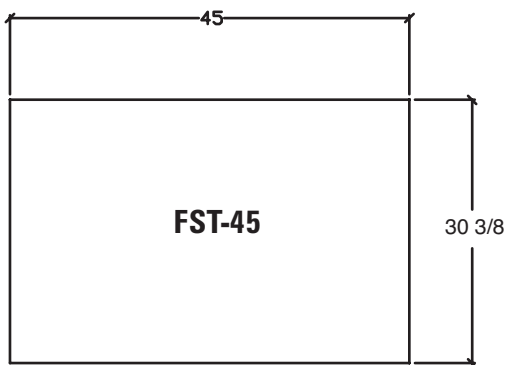
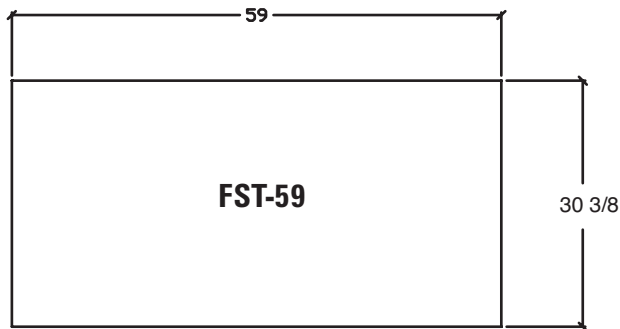
FOGEL GROUP USA, LLC



Undercounter Tables and Worktops

Technical Data - Side View - Plan View

FST-27, FST-45, FST-59 Side View - Plan View



• Specification subject to change without notice.

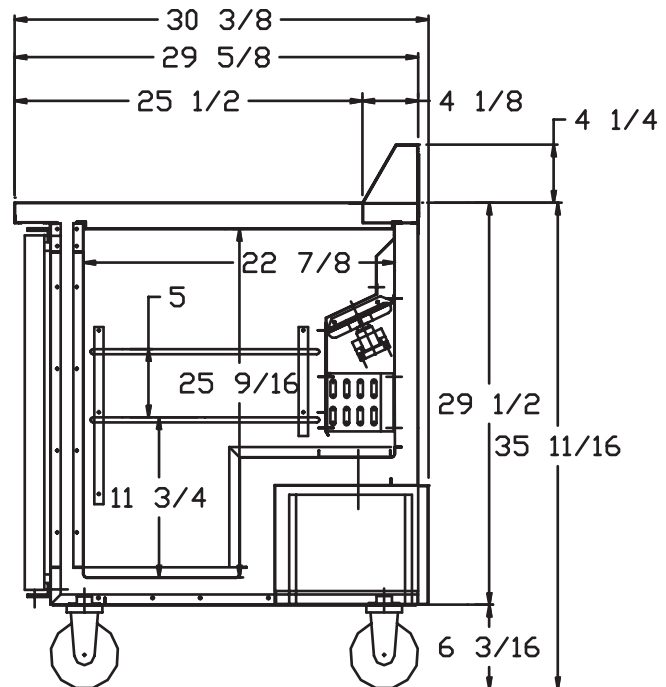
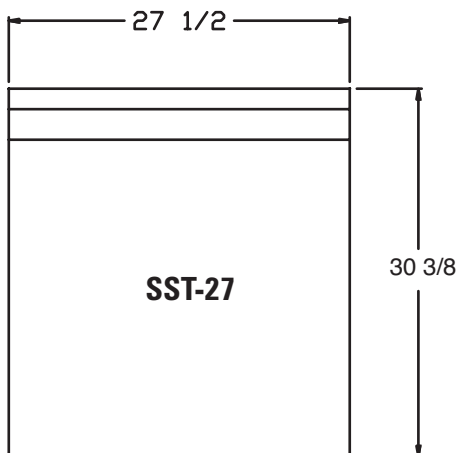
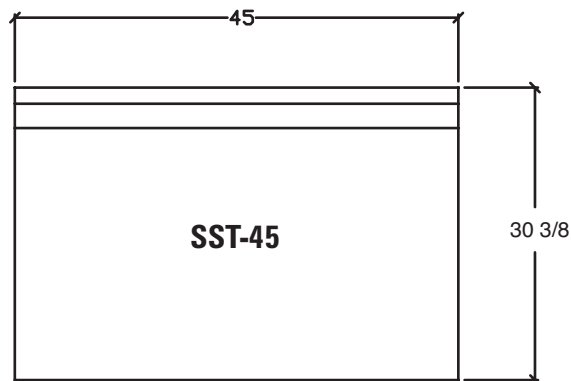
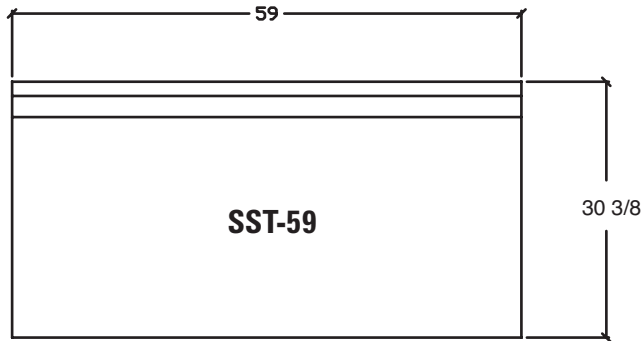
FOGEL GROUP USA, LLC

831 E Cayuga Street, Philadelphia, PA 19124 USA • (215) 464-6800 • 1-800-344-8222
Fax (215) 969-4890 • E-Mail: sales@fogelusa.com • www.fogelusa.com





SST-27, SST-45, SST-59 Side View - Plan View



• Specification subject to change without notice.

FOGEL GROUP USA, LLC

831 E Cayuga Street, Philadelphia, PA 19124 USA • (215) 464-6800 • 1-800-344-8222
Fax (215) 969-4890 • E-Mail: sales@fogelusa.com • www.fogelusa.com

