

F-2001MLH

MODULAR FLAKER ICE MACHINE

LOW-SIDE SERIES

Item # _____

Project: _____

Qty: _____

*AutoCad available on KCL

F-2001MLH

10/14

Item #13129

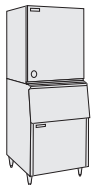
FLAKER DIMENSIONS

W x D x H

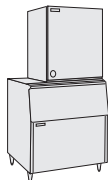
F-2001MLH

30 x 27^{1/2} x 34^{7/16}*

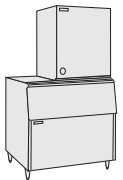
* Requires a rack system for installation



B-500



B-700



B-800



B-900

F-2001MLH*

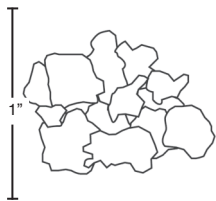
Shown on an optional
B-900

* Requires a rack
system for installation



Also available
on Large Bins:
B-1150SS
B-1300SS
B-1500SS
B-1650SS

*FLAKED ICE DIMENSIONS



*approximate size, image not to scale

- Up to 2280 lbs. of ice production per 24 hours
- Durable stainless steel exterior
- Protected by H-GUARD Plus Antimicrobial Agent
- Advanced CleanCycle24™ Design
- Removes sediment
- Clean pure ice
- Longer life and easy maintenance
- R-404A Refrigerant



© HOSHIZAKI AMERICA, INC.

Warranty

Valid in United States, Canada, Puerto Rico, & U.S. Territories. Contact factory for warranty in other countries.

Three Year - Parts & Labor on entire machine. (Serial numbers VxxxxxJ and after.)

Five Year - Parts & Labor on Compressor, air-cooled condenser.



Hoshizaki

F-2001MLH MODULAR FLAKER ICE MACHINE LOW-SIDE SERIES

DIMENSIONS W x D x H

F-2001MLH
30 x 27^{1/2} x 34^{7/16}"

* Requires a rack system for installation

AIR-COOLED

Water Temp° F.	50°	70°	90°	
Air Temp° F.	70°	2280	1955	1915
80°	2010	1835	1795	
90°	1760	1733	1685	

UTILITY CONSUMPTION

Model Number	KWH per 100 LBS. 90/70	Potable Water Gal. per 100 lbs.
F-2001MLH	0.6	12.0

SPECIFICATIONS

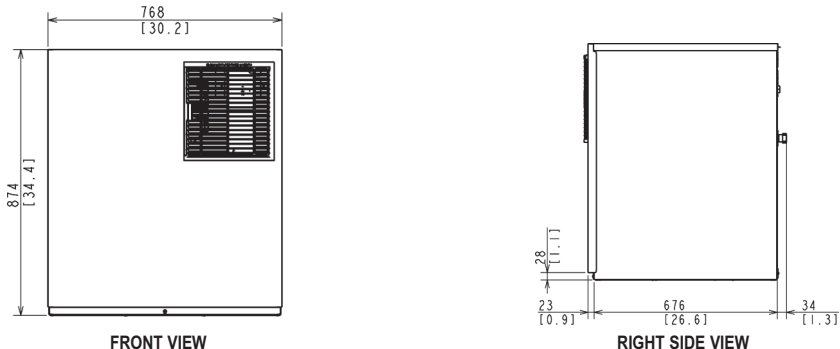
Model Number	Amperage	Min. Circuit Ampacity	Shipping Weight
F-2001MLH	6.14	15	250 lbs.

STORAGE BINS

Model Number	Application Capacity	ARI-Rated Capacity
B-500	500 lbs.	360 lbs.
B-700	700 lbs.	550 lbs.
B-800	800 lbs.	600 lbs.
B-900	900 lbs.	660 lbs.
B-1150	1150 lbs.	N/A
B-1300	1275 lbs.	N/A
B-1500	1490 lbs.	N/A
B-1650	1605 lbs.	N/A

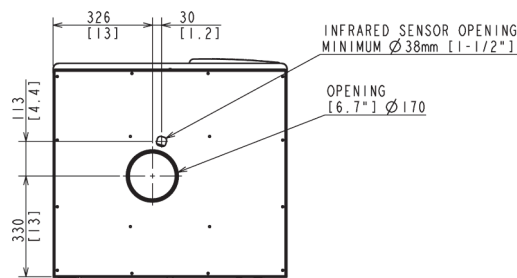
ELECTRICAL & PLUMBING/2001MLH

- 115V/60/1
- Icemaker Water Supply Line: Minimum 1/4" Nominal ID Copper Water Tubing or Equivalent
- Icemaker Drain Line: Minimum 3/4" Nominal ID Hard Pipe or Equivalent

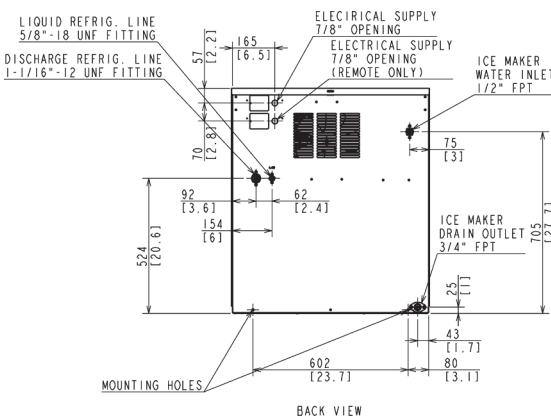


FRONT VIEW

RIGHT SIDE VIEW



ICE DROP ZONE



BACK VIEW

OPERATING LIMITS

- Ambient Temp Range 45 - 100°F
- Water Temp Range 45 - 90°F
- Water Pressure 10 - 113psig
- Voltage Range 104 - 127V

SERVICE

- Panels easily removed and all components accessible for service.
- Removable/cleanable air filter.



© HOSHIZAKI AMERICA, INC.

618 Hwy. 74 S., Peachtree City, GA 30269

TEL 1-800-438-6087

FAX 1-800-345-1325

www.hoshizaki.com

Printed in U.S.A.

